



WHW-200L-0C-220V-5V100mA-160CH
All-in-one Constant Temperature Chamber

Specification

Neware Technology Limited

1、 Product

WHW-200L-0C-220V-5V100mA-160CH

All-in-one Constant Temperature Chamber


(Picture for reference, please confirm the actual product)






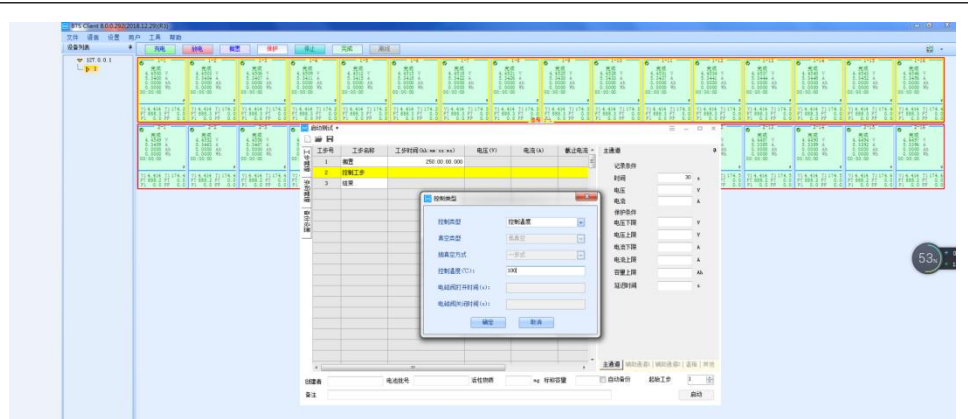
| | |
|--------------------------------|--|
| 1.1 Model | WHW-200L-0C-220V-5V100mA-160CH |
| 2、 Application | Constant temperature test of coin cells. Apply to electricians, electronics instrumentation, materials, semiconductors, etc. It is a reliability testing equipment for battery performance test by new energy enterprises and scientific research institutes. |
| 3 、 Testing Material Limit | Strictly forbidden to test or storage in below situation: Inflammable, explosive and volatile materials Corrosive material Biological sample Strong electromagnetic emission source Radioactive substance Extremely toxic substance Anything that can produce above substance or material |
| 4、 Volume and Dimension | |
| 4.1 Internal volume | 200L |
| 4.2 Internal dimension | W500 mm×D500 mm×H800 mm |
| 4.3 Overall dimension | W600 mm×D920 mm×H1800 mm |

| | |
|-------------------------------------|--|
| 4.4 Net Weight | About 260KG |
| 5、 Performance | |
| 5.1 Testing environmental condition | Ambient temperature:+25°C Relative humidity≤85% No sample in the test box (No loading) |
| 5.2 Temperature range | 0~60°C |
| 5.3 Temperature range | ≤ 0.5°C (No loading, stable temperature) |
| 5.4 Temperature deviation | ±2.0°C(No loading, stable temperature) |
| 5.5 Heating time | 25°C→60°C ≤30 min |
| 5.6 Cooling time | 25°C→0°C ≤50 min |
| 6、 Structure | |
| 6.1 Heat Preservation | Outside material: High quality cold-bonded steel plate, surface spray and paint treatment Inner material: Stainless steel SUS304 Cabinet heat preservation material: Rigid polyurethane foam(insulation thickness: 50mm) |
| 6.2 Air conditioning | Axial flow fan、 heater, evaporator |
| 6.3 Standard configuration | Box door: hollow anti-fog tempered glass + stainless steel frame Cable Holes (soft rubber plugs): φ50mm, 4 pcs (Rear of Cabinet) Caster: 4 Sample layer: 4 Sample layer with high temperature resistant electric insulation ; Loading bearing (evenly distributed):10kg/ layer Lighting: 1 pcs LED |
| 6.4 Control panel | Touch control buttons |

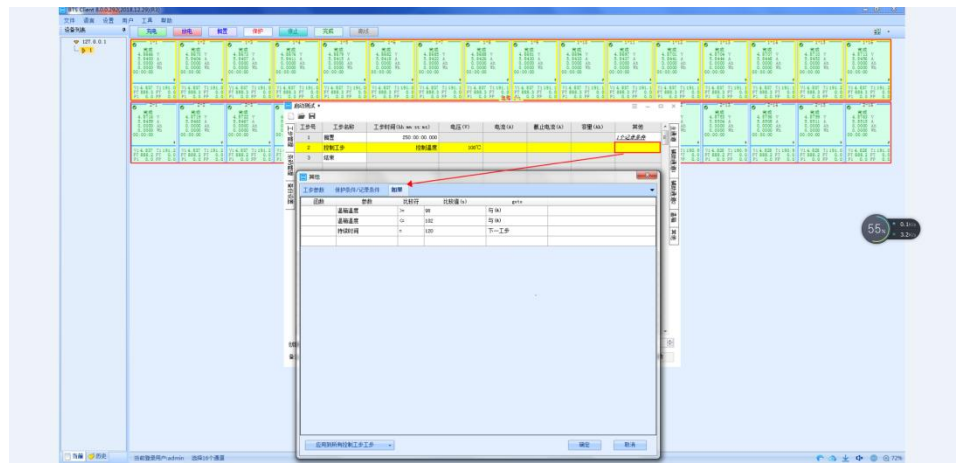


| | |
|---|--|
| 6.5 Heater | Stainless heating pipe Heater control mode: contact-free equiperiodic pulse width adjustment, SSR (solid state relay) |
| 7、 Refrigeration System | |
| 7.1 Refrigeration compressor | Fully enclosed compressor  |
| 7.2 Cooling mode | Air cooled |
| 7.3 Throttling device | Capillary |
| 7.4 Refrigerant | R134a |
| 7.5 Welding process | Nitrogen-filled shielded welding |
| 8、 Control System | |
| 8.1 Controller | LED digital display + touch key controller |
| 8.2 Setting method | touch-key |
| 8.3 Controlling method | Forced circulation ventilation balance temperature regulation method. The control system controls the output of the heater according to the set temperature value through the PID automatic calculation output result, so as to achieve dynamic balance. |
| 8.4 Communication | Ethernet standard interface |
| 8.5 Temperature control module | Independent research and development (through high and low temperature impact, vibration and EMC and other related reliability performance testing) |
| 9、 The connection between chamber and battery tester | |

| | |
|---|--|
| <p>9.1 Battery Testing Equipment</p> | <p>5PCS BT-4032Q-5V100mA-HWX</p> |
| <p>9.2 Control unit</p> | <p>1 PCS BT-4002-ZWJPLUS-HWX</p> |
| <p>9.3 Switch</p> | <p>1 PCS</p> |
| <p>9.4 Control chamber in Neware BTS software</p> | <p>Step 1: Open client software</p>  <p>Step 2: Select "Set chamber"</p>  <p>Step 3: Enter the chamber No. you want to set</p>  <p>Step 4: Set the chamber control temperature.</p> |



Step 5: Set step control condition



10、 Safety protection configuration

| | |
|-----------------|--|
| Testing chamber | leakage protection、 short circuit protection |
|-----------------|--|

11、 Other configurations

| | |
|-------------------|--|
| 11.1 Power cables | (1 phase + protective ground wire)1-wire cable |
|-------------------|--|

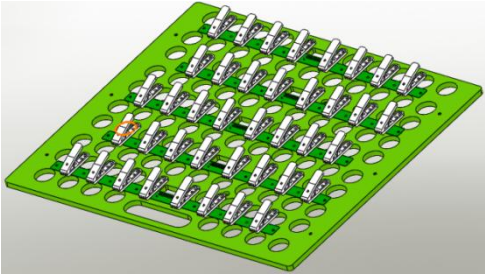
| | |
|---|-----------------------------|
| 11.2 Main power leakage circuit breaker | 1 phase + protective ground |
|---|-----------------------------|

12、 Transportation

| | |
|-----------|---------|
| Dimension | See 4.3 |
|-----------|---------|

13、 Condition of usage (Prepared by customer)

| | |
|-------------------|--|
| 13.1 Installation | Smooth land, flatness $\leq 5\text{mm}/2\text{m}$, well ventilated No strong vibration or strong electromagnetic field around the equipment. |
|-------------------|--|

| | |
|---|--|
| Requirement | <p>No inflammable, explosive, corrosive and dust around the equipment.</p> <p>Proper use and maintenance space should be left around the equipment. The opening door of the equipment should have a space where the door can be opened and closed normally, and there is no other object in front of the door.</p> |
| 13.2 Environment conditions | <p>Temperature: 5°C~35°C</p> <p>Relative humidity: ≤85%</p> <p>Air pressure: 86kPa ~ 106kPa</p> |
| 13.3 Power supply conditions | <p>AC(220±22)V (50±0.5)Hz Single phase + protective ground</p> <p>Protect the earth grounding resistance less than 4 Ω</p> |
| Power | The user is required to equip the equipment with an air or power switch of corresponding capacity at the installation site, and the switch must be independently used by the equipment |
| Distribution power | 2.5 kW |
| Maximum current | 14 A |
| 13.4 Others | Please do not open the chamber's door too often, it may affect the testing temperature in chamber |
| 14、 Battery Specification and placement mode | |
| 14.1 Battery Specification | Coin cells 5V100mA160CH |
| 14.2 Battery placement | 4 layer placement, each has 1 fixture panels, each fixture panel is 40CH |
| <p>14.3 Sample layer (can be customized)</p> <p>The sample stand is made of resistant electric insulation material</p> |  <p>Note: The power cord (including plug) shall be ordered separately according to the user's specific requirements. The pictures are for reference only; the actual product shall prevail.</p> |
| 15、 Simulation diagram when the temperature in the chamber is running stably(Only for reference) | |

No-load running

