



**WHW-25L+15C-5V100mA-16CH**

**Mini Desktop Constant Temperature All in one Test Chamber**

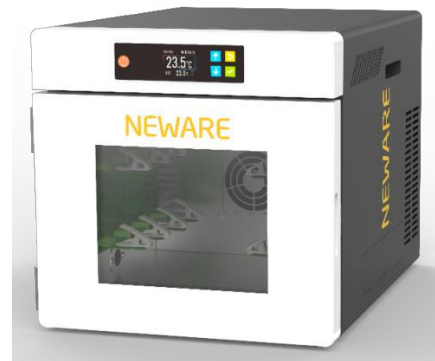
# **Specification**

**Neware Technology Limited**

## 1、 Product

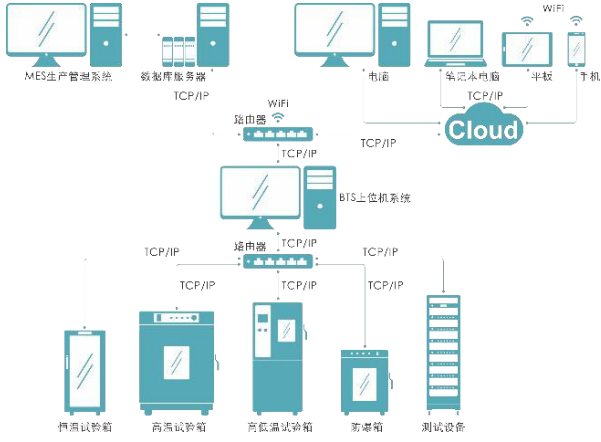

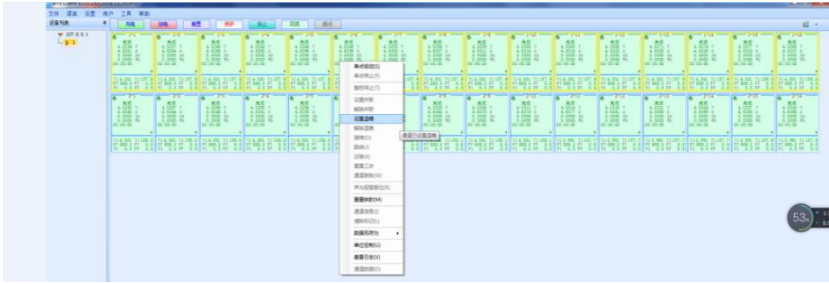
Mini Desktop Constant Temperature All in one Test Chamber

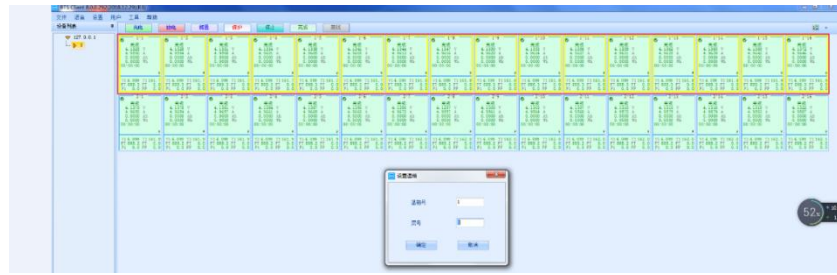
(Picture for reference, please confirm the actual product)



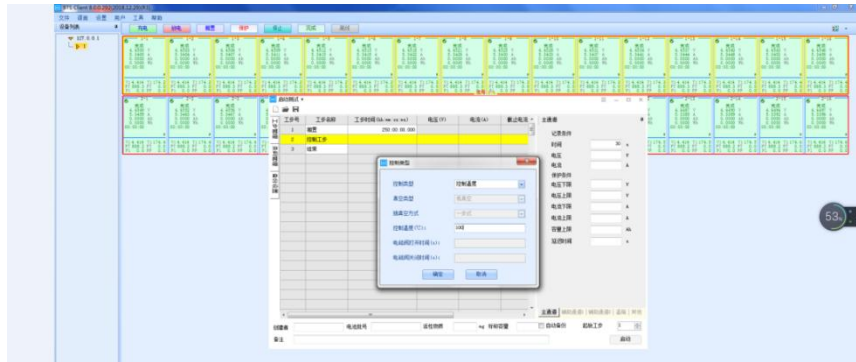
1.1 Model	WHW-25L+15C-5V100mA-16CH
2、 Application	Constant Temperature Testing for Coin Cells
3 、 Testing Material Limit	<b>Strictly forbidden to test or storage in below situation:</b> <b>Inflammable, explosive and volatile materials</b> <b>Corrosive material</b> <b>Biological sample</b> <b>Strong electromagnetic emission source</b> <b>Radioactive substance</b> <b>Extremely toxic substance</b> <b>Anything that can produce above substance or material</b>
<b>4、 Volume and Dimension</b>	
4.1 Internal volume	25L
4.2 Internal dimension	W360 mm×D300 mm×H220 mm
4.3 Overall dimension	W440 mm×D550 mm×H390 mm
4.4 Net Weight	Approximately 45 kg
<b>5、 Performance</b>	
5.1 Testing environmental condition	Ambient temperature: +25°C Relative humidity ≤ 85% No sample in the test box (No loading)
5.2 Test Method	GB/T 5170.2-2017 Temperature Testing Equipment

5.3 Temperature range	15~60°C
5.4 Temperature Fluctuation Degree	≤±0.5°C (No loading, stable temperature)
5.5 Temperature deviation	±2.0°C (No loading, stable temperature)
5.6 Heating time	25°C→60°C ≤50 min (No-load, Average Nonlinearity)
5.7 Cooling time	25°C→15°C ≤60 min (No-load, Average Nonlinearity)
<b>6、 Structure</b>	
6.1 Heat Preservation	<p>Outside material: High quality cold-bonded steel plate, surface spray and paint treatment</p> <p>Inner material: Stainless steel SUS304</p> <p>Cabinet heat preservation material: Rigid polyurethane foam (insulation thickness: 50mm)</p>
6.2 Air conditioning	Axial flow fan、 heater, evaporator
6.3 Standard configuration	<p>Box door: hollow anti-fog tempered glass + stainless steel frame</p> <p>Cell Fixture Connecting Plates: 2 pcs</p> <p>Lighting: LED lighting lamp</p>
6.4 Control panel	Touch control buttons
6.5 Cooling/ Heating method	Semiconductor Cooling (Heating) Module
<b>7、 Electrical System</b>	
7.1 Controller	LED digital display + touch key controller
7.2 Setting method	TouchScreen
7.3 Controlling method	Forced circulation ventilation balance temperature regulation method. The control system controls the output of the heater according to the set temperature value through the PID automatic calculation output result, so as to achieve dynamic balance.

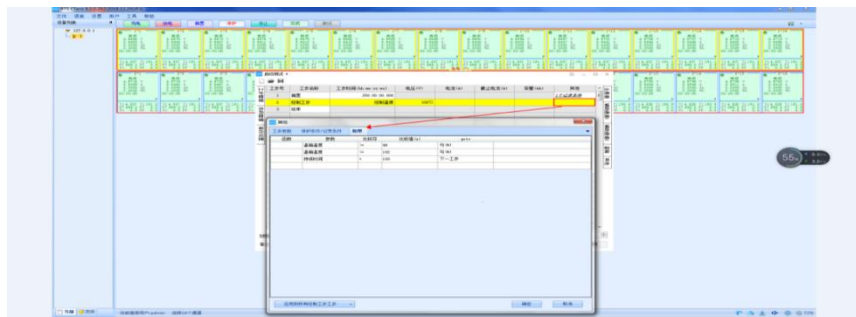
7.4 Communication	Ethernet standard interface
<b>8、 Battery Testing Equipment and Test Interconnection</b>	
8.1 Test Equipment	5V100mA16CH (BT-4016Q-5V100mA-TK-HWX)
8.2 Control unit	1 piece
8.3 Network switch	1 piece
8.4 Network Schematic Diagram	 <p>The diagram illustrates a network architecture. At the top, 'MES生产管理系统' (MES Production Management System) and '数据库服务器' (Database Server) are connected via 'TCP/IP'. A '路由器' (Router) is connected to 'WIFI' and 'TCP/IP'. Below, '电话' (Phone), '笔记本电脑' (Laptop), '平板电脑' (Tablet), and '手机' (Mobile Phone) are connected via 'WIFI' to a 'Cloud'. A '交换机' (Switch) is connected to 'TCP/IP' and '路由器'. At the bottom, 'BTS上位机系统' (BTS Upper Computer System) is connected to 'TCP/IP'. A '交换机' (Switch) is connected to 'TCP/IP' and '路由器'. Below, '槽温试验箱' (Slot Temperature Test Chamber), '高低温试验箱' (High/Low Temperature Test Chamber), '高低温试验箱' (High/Low Temperature Test Chamber), '苏燥箱' (Desiccator), and '测试设备' (Test Equipment) are connected via 'TCP/IP' to the switch.</p>
8.5 Control chamber in Neware BTS software	<p><b>Step 1:</b> Open the software interface.</p>  <p><b>Step 2:</b> Select and set the test chamber.</p>  <p><b>Step 3:</b> Locate the test chamber that needs to be set.</p>



**Step 4:** Set the control temperature of the test chamber.



**Step 5:** Set the control conditions for each working step.



**9、 Power cables**

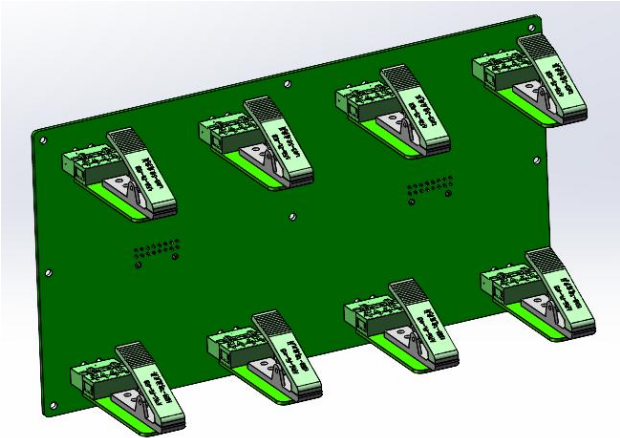
Power cables	(Single-phase + Protective Earth) Cable: 1 pc (Specific specifications to be selected according to contract requirements)
--------------	---

**10、 Transportation The test chamber is of integrated design and shall be transported as a whole**

Dimension	W440 mm×D550 mm×H390 mm (Without package)
-----------	---

**11、 Condition of usage ( Prepared by customer)**

11.1 Installation Requirement	No strong vibration or strong electromagnetic field around the equipment. No inflammable, explosive, corrosive and dust around the equipment.
-------------------------------	--

	Proper use and maintenance space should be left around the equipment.
11.2 Environment conditions	Temperature: 25°C±3°C Relative humidity: ≤85% Air pressure: 86kPa ~ 106kPa
11.3 Power supply conditions	AC(220±10%)V /50Hz or AC(110±10%)V /60Hz Single-phase + Protective Earth
Power Supply Capacity	0.2kW
Maximum current	1A (220V) 或 2A (110V)
11.4 Others	Opening the door of the test chamber during the test will cause temperature fluctuations inside the chamber.
<b>12、 Battery Specification and placement mode</b>	
12.1 Battery Specification	Coin cells (mA)
12.2 Battery placement	Four-layer placement, with a maximum of 16CH per layer
12.3 Form of cell tray and cell fixing method	 <p>Note:</p> <ol style="list-style-type: none"> <li>1. The coin cell fixture adopts a plug-in connection method with the left and right side walls of the inner chamber.</li> <li>2. The pictures are for reference only, and the actual product shall prevail.</li> </ol>